



SOFFIT

FOR
CEILING & WALL



ABOUT US	03
SOFFIT PANELS	04
DIMENSIONS	05
COLLECTION	06
FEATURES	09
ACCESSORIES	11





ABOUT US

At **M.J. International**, we take pride in delivering premium-quality products under our trusted brand, **TYSON**. As dedicated importers of advanced Soffit Panels, we combine innovation, craftsmanship, and performance to offer solutions that elevate both form and function.

Our manufacturing partner is a high-tech, professional enterprise with expertise in heat-resistant panel technology, including **soffit panels**, external wall insulation boards, PU foam sandwich panels, and decorative thermal cladding. Backed by state-of-the-art production lines and a stringent quality control system, our panels are engineered for superior durability, thermal insulation, and energy efficiency.

With **eco-friendly materials** and a wide range of customizable textures, patterns, and colors, TYSON Soffit Panels deliver lasting aesthetic appeal while supporting sustainable construction practices. At M.J. International, our commitment to quality and customer satisfaction has earned us a trusted name in the building materials industry.

SOFFIT PANELS

**THE WARMTH OF WOOD,
WITHOUT THE HASSLE.**

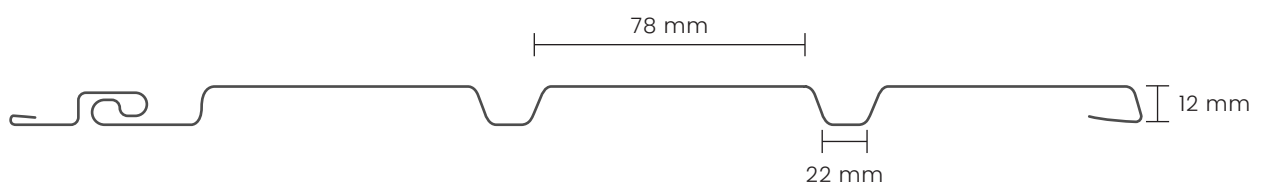
Crafted from high-quality polymer, **Soffit Panels** beautifully mimic the look and feel of real wood—offering the perfect balance between natural charm and modern convenience. Designed with Tongue and Groove interlocking technology, these panels are easy to install and create a smooth, seamless finish.

Whether you're designing a cozy interior or a contemporary space, Soffit Panels blend effortlessly with any theme. They provide a stylish, cost-effective alternative to traditional wooden ceilings—delivering elegance, durability, and ease, all in one smart solution.



DIMENSIONS

Each panel measures 2900 mm x 383 mm, with a thickness of 12 mm, and utilizes a Tongue and Groove interlocking system for a tight, seamless finish. The design ensures easy installation, minimal wastage, and a uniform look across surfaces. Whether you're covering ceilings, eaves, or accent walls, Soffit Panels provide a perfect fit that enhances any architectural vision.



COLLECTION

LZG SERIES



White



Grey



Maple Wood



Mahogany



Walnut







FEATURES



Fire Retardant



Light Weight



Water Proof



Easy to Install



Maintenance Free



Unique Interlocking System



Real Wood Look



No VOC

HEAT TRANSFER INNOVATION & ADVANCED TEXTURE TECHNOLOGY

Tyson Soffit Panels unveil the secret to timeless elegance with cutting-edge heat transfer technology. This European innovation brings our panels to life with stunningly realistic textures, capturing the rich character and detail of natural wood in every grain.

Feel the sun-warmed touch beneath your fingers, admire the wood-grain beauty overhead, and transform your space into a haven of effortless sophistication. Tyson's technology doesn't just mimic wood—it preserves its essence, where every knot and vein tells a story inspired by nature's finest craftsmanship.





ACCESSORIES

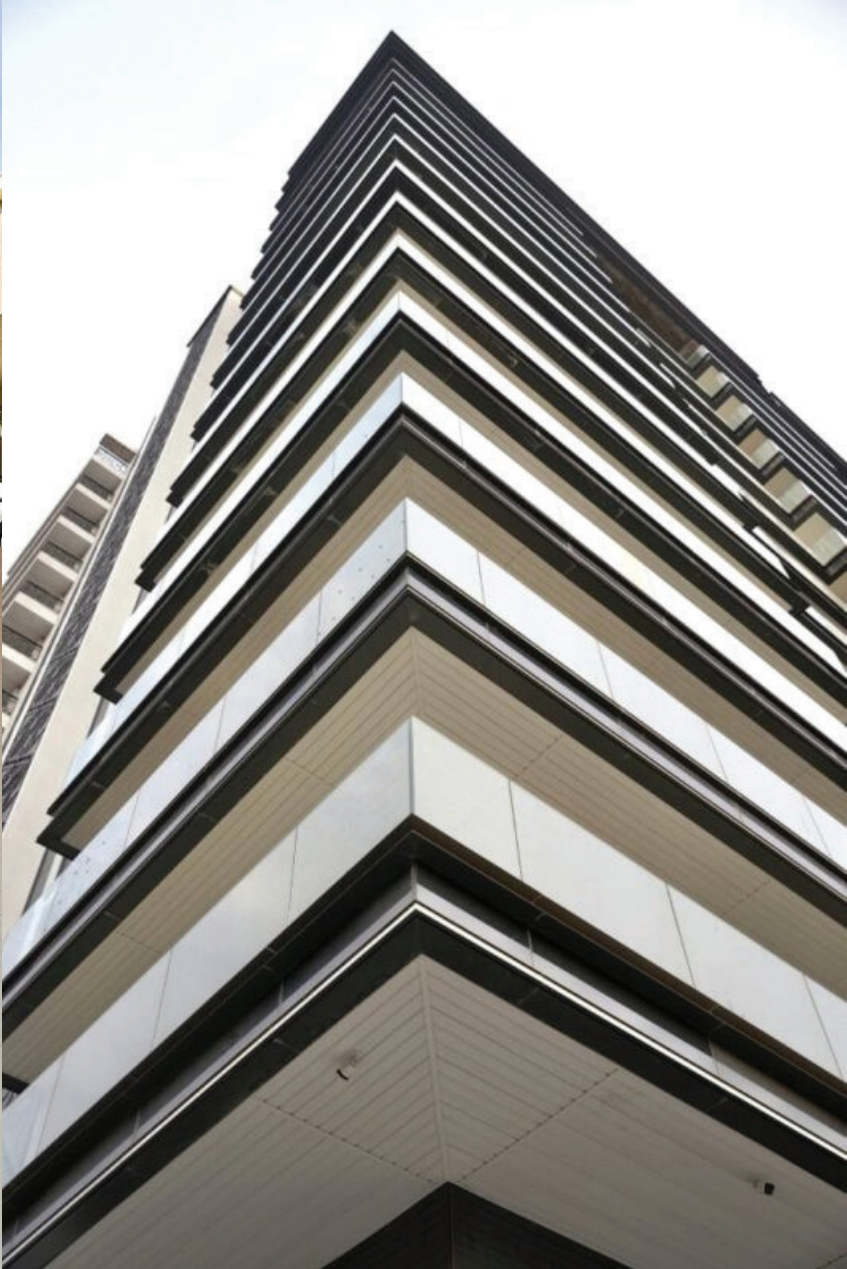


J TRIM



H TRIM











The manufacturer reserves the right to change the colours, dimensions, and functions of the presented products. This catalogue is published for informational purposes only. The catalogue presents examples of patterns from the offer. Some items presented in the arrangement, photos are for decoration only and are not for sale. Copying and distribution of any materials contained in the catalogue without the written consent of the publisher is prohibited. The colours in the catalogue may differ from reality.